

Entry Gallery**Tamiko Nishimura***My Journey II – Mitaka, Tokyo (#01)*, 1978

Signed and dated on verso

Vintage gelatin silver print

Printed by the artist in 1980

Paper: 18 x 20 in (45.7 x 50.8 cm)

Main Gallery

Image: 11 3/8 x 17 1/4 in (28.8 x 43.7 cm)

**Tamiko Nishimura***Eternal Chase – Sado, Niigata Pref.*, 1978

Signed and dated on verso

Vintage gelatin silver print

Printed by the artist in 1978

Paper: 8 x 10 in (20.3 x 25.4 cm)

Image: 6 1/4 x 9 1/4 in (15.8 x 23.6 cm)

**Tamiko Nishimura***Eternal Chase – Akita Pref.*, 1970

Signed and dated on verso

Vintage gelatin silver print

Printed by the artist in 1970

Paper: 10 x 12 in (25.4 x 30.5 cm)

Image: 7 3/4 x 11 3/8 in (19.8 x 29 cm)

**Tamiko Nishimura***Eternal Chase – Hakodate, Hokkaido*, 1970-72

Signed and dated on verso

Vintage gelatin silver print

Printed by the artist in 1970-72

Paper: 10 x 12 in (25.4 x 30.5 cm)

Image: 6 x 9 1/4 in (15.3 x 23.4 cm)

**Tamiko Nishimura***Shikishima – Yokohama, Kanagawa Pref. (#067)*, 1970

Signed and dated on verso

Modern gelatin silver print

Printed by the artist in 2015

Paper: 11 x 14 in (27.9 x 35.6 cm)

Image: 13 1/4 x 8 7/8 in (33.6 x 22.6 cm)

Edition 1 of 5

**Tamiko Nishimura***Shikishima – Hakodate, Hokkaido (#034), 1969*

Signed and dated on verso

Modern gelatin silver print

Printed by the artist in 2015

Paper: 11 x 14 in (27.9 x 35.6 cm)

Image: 8 7/8 x 13 1/4 in (22.6 x 33.6 cm)

Edition 1 of 5

**Tamiko Nishimura***My Journey – Tokyo (#13), 1979*

Signed and dated on verso

Vintage gelatin silver print

Printed by the artist in 1979

Paper: 8 x 10 in (20.3 x 25.4 cm)

Image: 6 1/8 x 9 1/2 in (15.6 x 24.1 cm)

**Tamiko Nishimura***Eternal Chase – Tsugaru Peninsula, Aomori Pref., 1970*

Signed and dated on verso

Vintage gelatin silver print

Printed by the artist in 1970

Paper: 10 x 12 in (25.4 x 30.5 cm)

Image: 7 3/4 x 11 3/8 in (19.8 x 29 cm)

**Tamiko Nishimura***Eternal Chase – Kodomari, Aomori Pref., 1970*

Signed and dated on verso

Vintage gelatin silver print

Printed by the artist in 1970

Paper: 10 x 12 in (25.4 x 30.5 cm)

Image: 6 x 9 1/8 in (15.4 x 23.3 cm)

**Tamiko Nishimura***Eternal Chase – Ohmagari, Akita Pref., 1970*

Signed and dated on verso

Vintage gelatin silver print

Printed by the artist in 1970

Paper: 10 x 12 in (25.4 x 30.5 cm)

Image: 7 3/4 x 11 3/8 in (19.8 x 29 cm)

**Tamiko Nishimura***Kittenish... (#039), 1970*

Signed and dated on verso

Vintage gelatin silver print

Printed by the artist in 1976

Paper: 14 x 17 in (35.6 x 43.2 cm)

Image: 14 x 17 in (35.6 x 43.2 cm)

**Tamiko Nishimura***Eternal Chase – Hakodate, Hokkaido, 1970-72*

Signed and dated on verso

Vintage gelatin silver print

Printed by the artist in 1970-72

Paper: 10 x 12 in (25.4 x 30.5 cm)

Image: 6 x 9 1/8 in (15.2 x 23.3 cm)

**Tamiko Nishimura***Eternal Chase – Hirosaki, Aomori Pref., 1970*

Signed and dated on verso

Vintage gelatin silver print

Printed by the artist in 1970

Paper: 10 x 12 in (25.4 x 30.5 cm)

Image: 7 3/4 x 11 3/8 in (19.8 x 29 cm)

**Tamiko Nishimura***Shikishima – Hakodate, Hokkaido (#004), 1970*

Signed and dated on verso

Modern gelatin silver print

Printed by the artist in 2024

Paper: 11 x 14 in (27.9 x 35.6 cm)

Image: 8 7/8 x 13 1/4 in (22.5 x 33.5 cm)

**Tamiko Nishimura***Eternal Chase – Around Shibetsu, Hokkaido, 1970-72*

Signed and dated on verso

Vintage gelatin silver print

Printed by the artist in 1970-72

Paper: 10 x 12 in (25.4 x 30.5 cm)

Image: 6 x 9 1/4 in (15.3 x 23.4 cm)

**Tamiko Nishimura***Eternal Chase – Tsugaru Strait, 1970*

Signed and dated on verso

Vintage gelatin silver print

Printed by the artist in 1970

Paper: 10 x 12 in (25.4 x 30.5 cm)

Image: 7 3/4 x 11 3/8 in (19.8 x 29 cm)

**Tamiko Nishimura***Eternal Chase – Kesennuma, Miyagi Pref., 1975*

Signed and dated on verso

Vintage gelatin silver print

Printed by the artist in 1975

Paper: 10 x 12 in (25.4 x 30.5 cm)

Image: 6 1/8 x 9 1/8 in (15.5 x 23.3 cm)

**Tamiko Nishimura***Eternal Chase – Hakodate, Hokkaido, 1972*

Signed and dated on verso

Vintage gelatin silver print

Printed by the artist in 1972

Paper: 10 x 12 in (25.4 x 30.5 cm)

Image: 7 3/4 x 11 3/8 in (19.7 x 29 cm)

**Tamiko Nishimura***My Journey – Suita, Osaka (#28), 1978*

Signed and dated on verso

Modern gelatin silver print

Printed by the artist in 2024

Paper: 11 x 14 in (27.9 x 35.6 cm)

Image: 8 7/8 x 13 1/4 in (22.5 x 33.5 cm)

Edition 1 of 5

Back Room**Tamiko Nishimura***Kittenish..., 1970*

Signed and dated on verso

Modern gelatin silver print

Printed by the artist in 2024

Paper: 10 x 12 in (25.4 x 30.5 cm)

Image: 7 3/8 x 11 1/4 in (18.8 x 28.6 cm)

Edition 2 of 5

**Tamiko Nishimura***Eternal Chase – Kobe, Hyogo Pref., 1972*

Signed and dated on verso

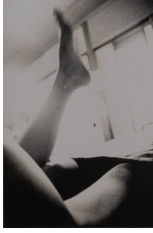
Modern gelatin silver print

Printed by the artist in 2024

Paper: 11 x 14 in (27.9 x 35.6 cm)

Image: 8 7/8 x 13 1/4 in (22.5 x 33.5 cm)

Edition 1 of 5

**Tamiko Nishimura***Shikishima (#062)*, 1970

Signed and dated on verso, by artist, post printing

Vintage gelatin silver print on baryta paper

Printed by the artist in 1970

Paper: 10 x 12 in (25.4 x 30.5 cm)

Image: 6 1/8 x 9 1/4 in (15.6 x 23.6 cm)

**Tamiko Nishimura***Shikishima – Okunakayama, Iwate Pref. (#016)*, 1972

Signed and dated on verso

Modern gelatin silver print

Printed by the artist in 2024

Paper: 11 x 14 in (27.9 x 35.6 cm)

Image: 8 7/8 x 13 1/4 in (22.5 x 33.5 cm)

Edition 1 of 5

**Tamiko Nishimura***Eternal Chase – On the Ohfunato line train, Miyagi Pref. (#016)*, 1972

Signed and dated on verso

Modern gelatin silver print

Printed by the artist in 2015

Paper: 11 x 14 in (27.9 x 35.6 cm)

Image: 8 7/8 x 13 1/4 in (22.6 x 33.6 cm)

**Tamiko Nishimura***Shikishima – Asahikawa, Hokkaido*, 1972

Signed and dated on verso

Modern gelatin silver print

Printed by the artist in 2022

11 x 14 in (27.9 x 35.6 cm) 1/4 in (22.5 x 33.5 cm) Edition 1 of 5

Flatfile Works

**Tamiko Nishimura***Shikishima – Aomori, Aomori Pref. (#023), 1969*

Signed and dated on verso

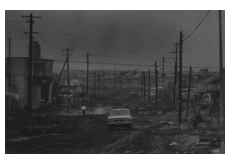
Modern gelatin silver print

Printed by the artist in 2024

paper: 11 x 14 in (27.9 x 35.6 cm)

image: 8 7/8 x 13 1/4 in (22.5 x 33.5 cm)

Edition 1 of 5

**Tamiko Nishimura***Eternal Chase – Kushiro, Hokkaido (#001), 1972*

Signed and dated on verso

Modern gelatin silver print

Printed by the artist in 2015

paper: 11 x 14 in (27.9 x 35.6 cm)

image: 8 7/8 x 13 1/4 in (22.6 x 33.6 cm)

Edition 1 of 5

**Tamiko Nishimura***Shikishima – Kobe, Hyogo Pref. (#051), 1969*

Signed and dated on verso

Modern gelatin silver print

Printed by the artist in 2024

paper: 11 x 14 in (27.9 x 35.6 cm)

image: 8 7/8 x 13 1/4 in (22.5 x 33.5 cm)

**Tamiko Nishimura***Shikishima – Hirosaki, Aomori Pref. (#049), 1970*

Signed and dated on verso

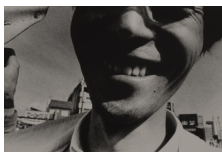
Modern gelatin silver print

Printed by the artist in 2015

paper: 11 x 14 in (27.9 x 35.6 cm)

image: 8 7/8 x 13 1/4 in (22.4 x 33.5 cm)

Edition 1 of 5


Tamiko Nishimura

Shikishima – Tsuyama, Okayama Pref. (#015),
1970

Signed and dated on verso

Modern gelatin silver print

Printed by the artist in 2015

paper: 11 x 14 in (27.9 x 35.6 cm)

image: 8 7/8 x 13 1/4 in (22.6 x 33.7 cm)

Edition 1 of 5


Tamiko Nishimura

Shikishima – Asahikawa, Hokkaido (#011), 1972

Signed and dated on verso

Modern gelatin silver print

Printed by the artist in 2015

paper: 11 x 14 in (27.9 x 35.6 cm)

image: 8 7/8 x 13 1/4 in (22.5 x 33.6 cm)

Edition 1 of 5


Tamiko Nishimura

Shikishima – Face (#001), 1971

Signed and dated on verso

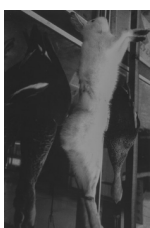
Modern gelatin silver print

Printed by the artist in 2015

paper: 11 x 14 in (27.9 x 35.6 cm)

image: 13 1/4 x 8 7/8 in (33.6 x 22.6 cm)

Edition 1 of 5


Tamiko Nishimura

Eternal Chase – Kakunodate, Akita Pref., 1978

Signed and dated on verso

Vintage gelatin silver print

Printed by the artist in 1978

paper: 10 x 12 in (25.4 x 30.5 cm)

image: 9 1/8 x 6 in (23.3 x 15.4 cm)


Tamiko Nishimura

Eternal Chase – Taro, Iwate Pref., 1972

Signed and dated on verso

Vintage gelatin silver print

Printed by the artist in 1972

paper: 10 x 12 in (25.4 x 30.5 cm)

image: 5 7/8 x 9 1/8 in (14.9 x 23.3 cm)



Tamiko Nishimura

Eternal Chase – Fukui Pref., 1970

Signed and dated on verso

Vintage gelatin silver print

Printed by the artist in 1970

paper: 8 x 10 in (20.3 x 25.4 cm)

image: 6 1/4 x 9 1/4 in (16 x 23.6 cm)